

**USACE Portland District (NWP) FFDRWG Update Form  
October 20, 2016**

**PROJECT INFORMATION**

Project Title	John Day Adult Ladder PIT Tag Antenna Installation
SCT Reference Number	
Project Manager (PM)	Tim Kuhn (NWP, 503-808-4752)
Technical Lead (TL)	Jay Dallas (NWP, 503-808-4959) Matt Wood (NWP, (503) 312-1325)
Biologist/Coordination	Ricardo Walker (NWP, 503-808-4709)

**PROJECT DESCRIPTION**

An adult PIT detection system was installed at The Dalles Dam in 2014; provision of PIT detection at John Day Dam was put on hold, pending further analysis. In May 2015, the Corps concurred with NOAA that PIT detection at John Day ladders would facilitate development of more accurate estimates of adult salmonid survival through the FCRPS. The Pacific States Marine Fisheries Commission (PSMFC, contracted by BPA) has developed plans for PIT installation in the John Day North and South fish ladders. The purpose of this project is to provide the technical review and infrastructure necessary to facilitate installation, operation, and maintenance of PIT detection systems in both fish ladders. Project scope must be consistent with the 2012 BPA/COE Memorandum of Understanding on PIT detection at FCRPS dams. This is a new project start to complete DDR, P&S and implementation by early 2017.

**PROGRESS AND KEY ISSUES (List)**

- The solicitation will be split into two phases.
  - Phase 1: Complete antenna install and associated wiring in the north and south fish ladder during the 16/17 winter maintenance period.
  - Phase 2: Install Data collection building at south ladder in new pre-cast building. Retrofit data collection room at north ladder in “Fire Protection Gallery” inside Navlock Gallery (monolith 13).

**CURRENT SCHEDULE**

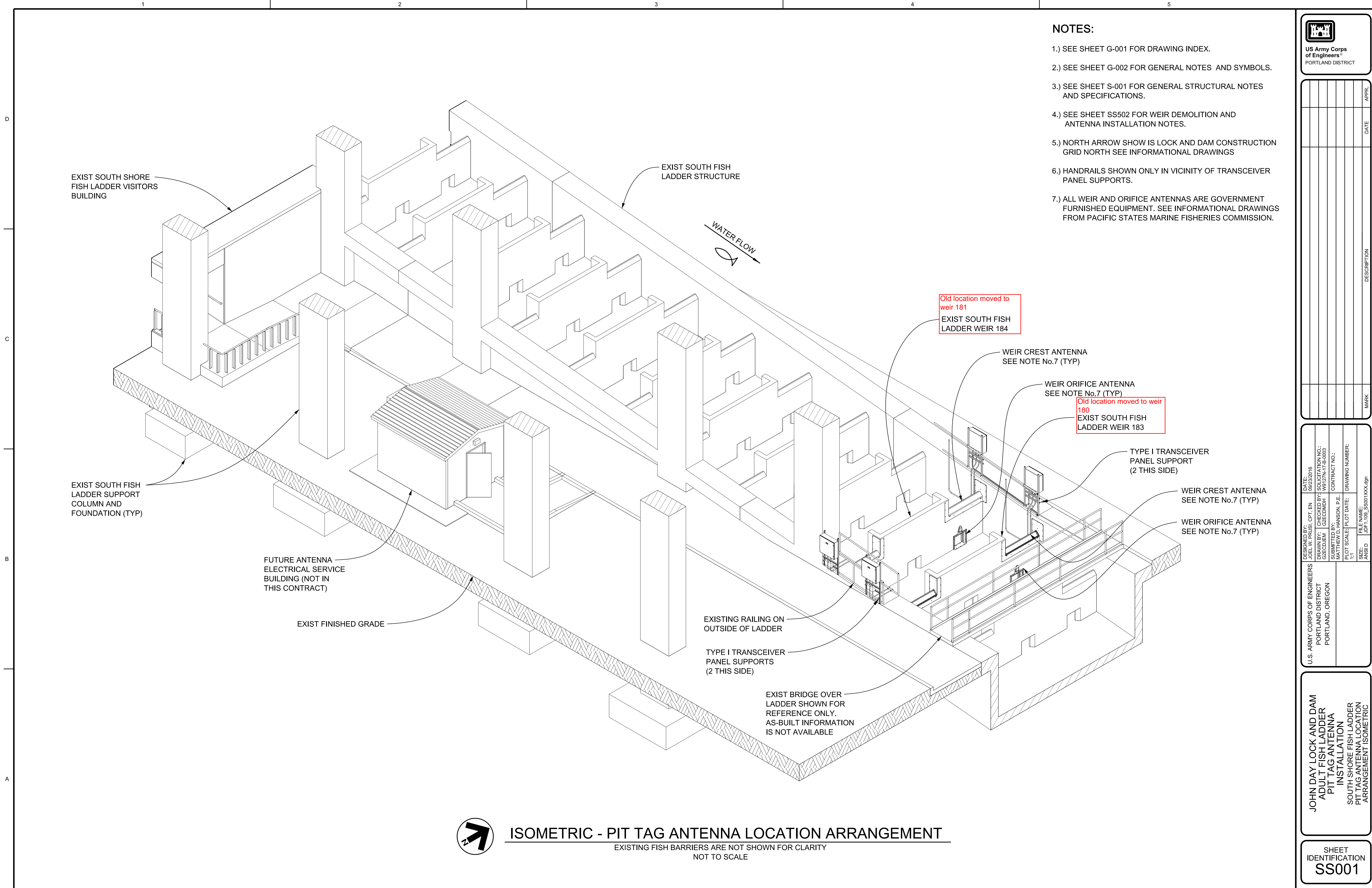
- Phase 1: work is out for solicitation.
  - The pre-bid site visit was 18 OCT 2016
  - Plan to award in November
  - Construction will begin during the 16/17 winter maintenance period.

- Phase 2:
  - Plans and specs are being developed with a plan to award in early spring
  - Functioning system by April/May 2017

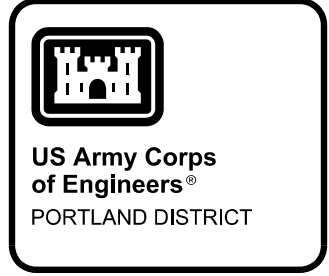
**FFDRWG REVIEW NEEDED AT MEETING? (If YES, list discussion topics below)**

YES

- Antenna installation in the south fish ladder has moved from weirs 183 and 184 to 180 and 181 (see attachments).
- Transceiver panel and conduit placement in the south fish ladder has changed (see attachments).



- NOTES:**
- 1.) SEE SHEET G-001 FOR DRAWING INDEX.
  - 2.) SEE SHEET G-002 FOR GENERAL NOTES AND SYMBOLS.
  - 3.) SEE SHEET S-001 FOR GENERAL STRUCTURAL NOTES AND SPECIFICATIONS.
  - 4.) SEE SHEET SS502 FOR WEIR DEMOLITION AND ANTENNA INSTALLATION NOTES.
  - 5.) NORTH ARROW SHOW IS LOCK AND DAM CONSTRUCTION GRID NORTH SEE INFORMATIONAL DRAWINGS
  - 6.) HANDRAILS SHOWN ONLY IN VICINITY OF TRANSCEIVER PANEL SUPPORTS.
  - 7.) ALL WEIR AND ORIFICE ANTENNAS ARE GOVERNMENT FURNISHED EQUIPMENT. SEE INFORMATIONAL DRAWINGS FROM PACIFIC STATES MARINE FISHERIES COMMISSION.



DATE	DESCRIPTION	MARK	APPR.

DESIGNED BY: CPT. EN	DATE: 9/19/2016	SCALE: 1"=1'	CONTRACT NO.:
DRAWN BY: G2ecdjem	DESIGNED BY: G2ecdjem	FILE NAME: JDF1.109_S001XXXX.dgn	DRAWING NUMBER:
CHECKED BY: G2ecdjem	DATE: 9/19/2016	SIZE: 11"	
APPROVED BY: G2ecdjem		ANSI D	
U.S. ARMY CORPS OF ENGINEERS PORTLAND DISTRICT PORTLAND, OREGON			

JOHN DAY LOCK AND DAM  
ADULT FISH LADDER  
PIT TAG ANTENNA  
INSTALLATION  
SOUTH SHORE FISH LADDER  
PIT TAG ANTENNA LOCATION  
ARRANGEMENT ISOMETRIC

SHEET IDENTIFICATION  
**SS001**



**ISOMETRIC - PIT TAG ANTENNA LOCATION ARRANGEMENT**

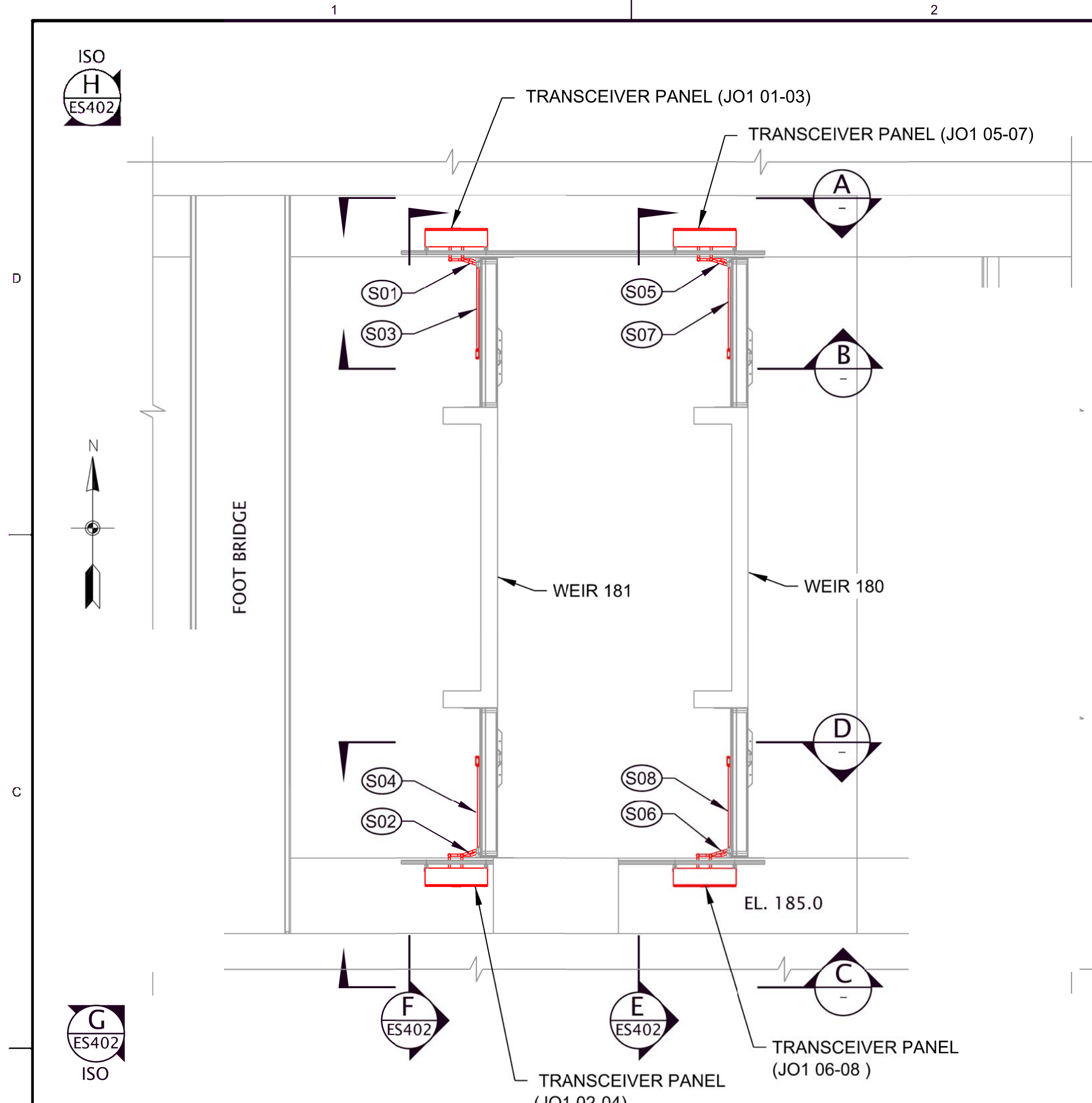
EXISTING FISH BARRIERS ARE NOT SHOWN FOR CLARITY  
NOT TO SCALE



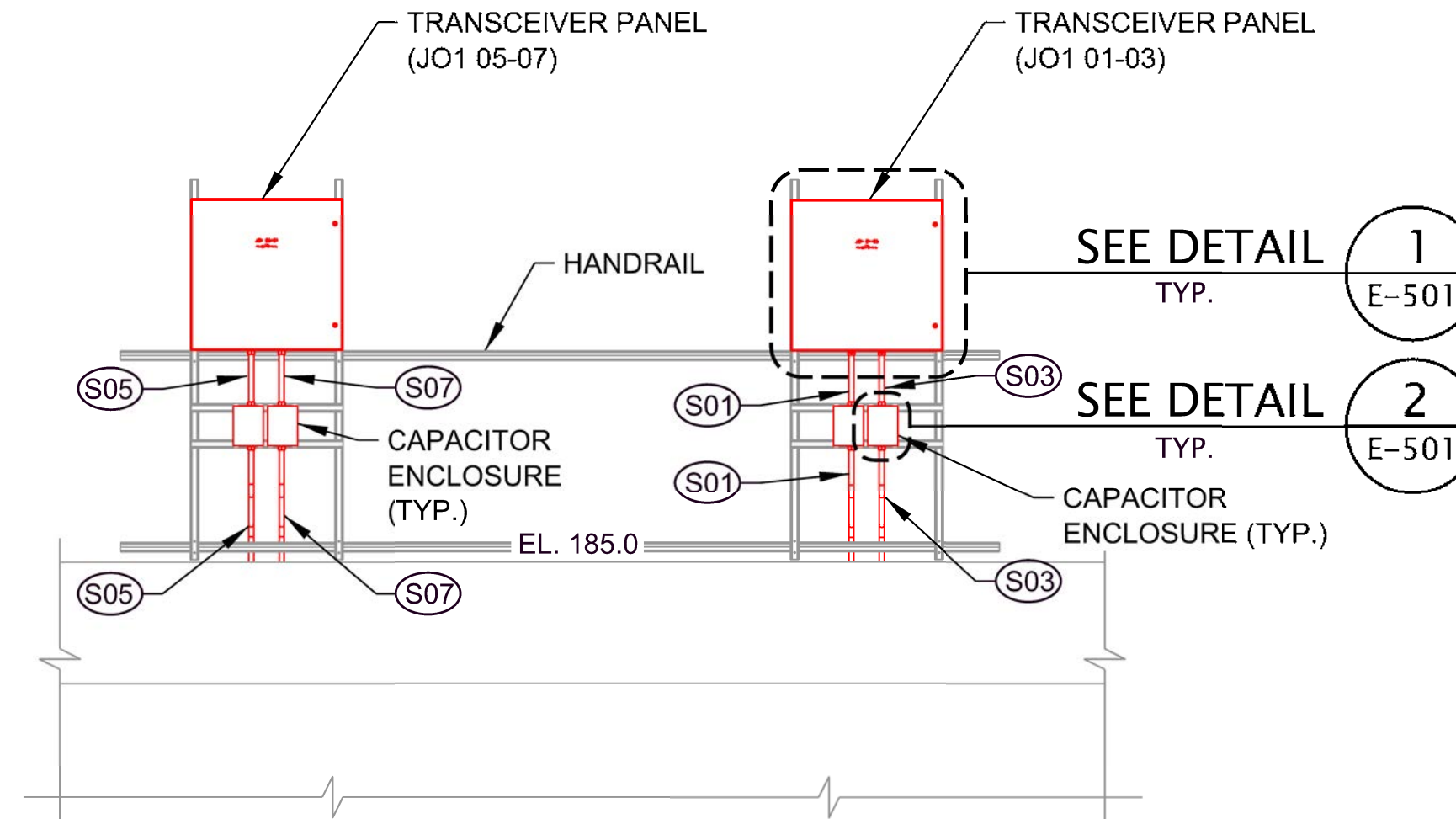
Fish Viewing  
FISH VIEWING  
RELEASE



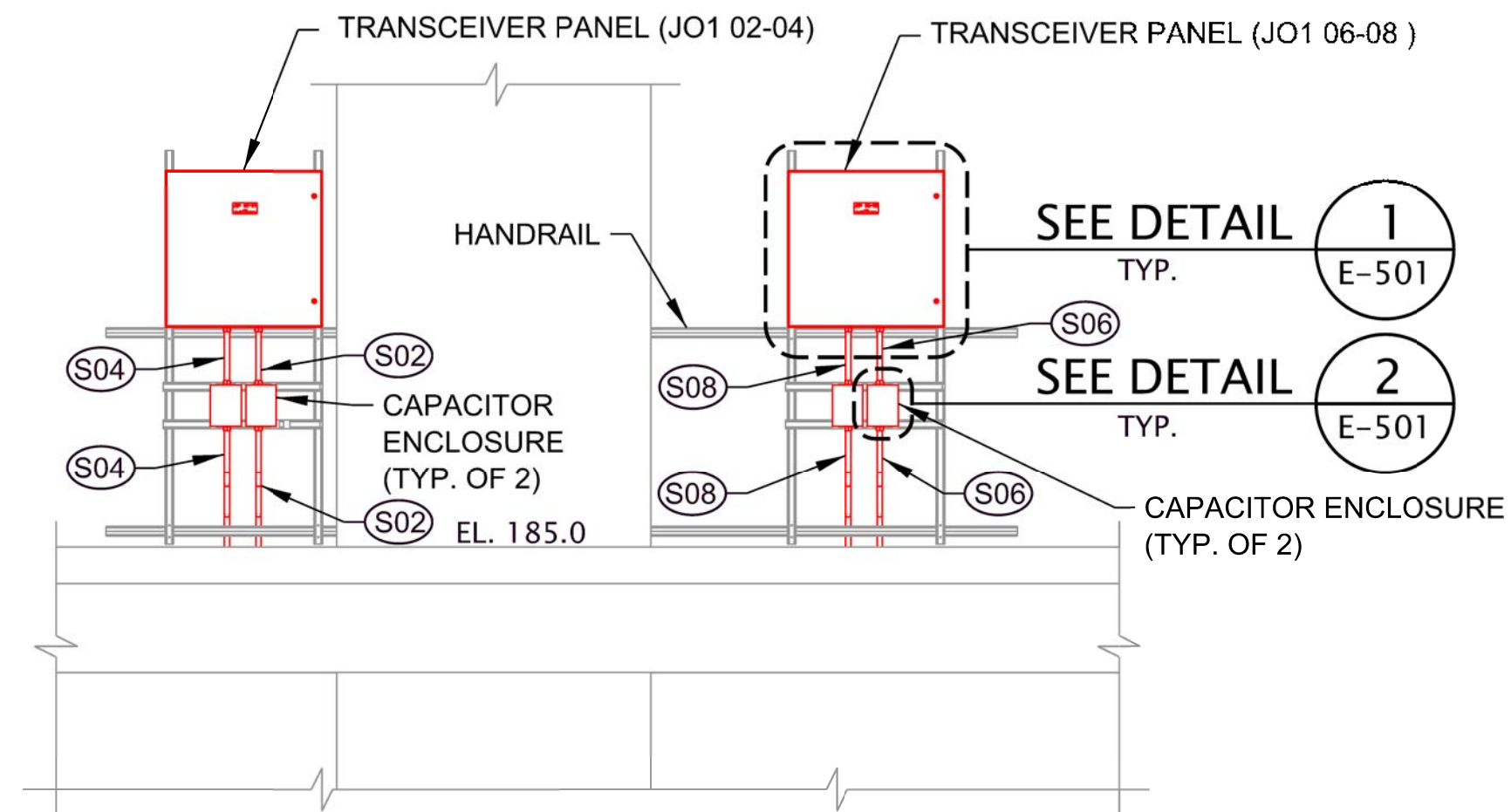
VIEWING  
POWERHOUSE



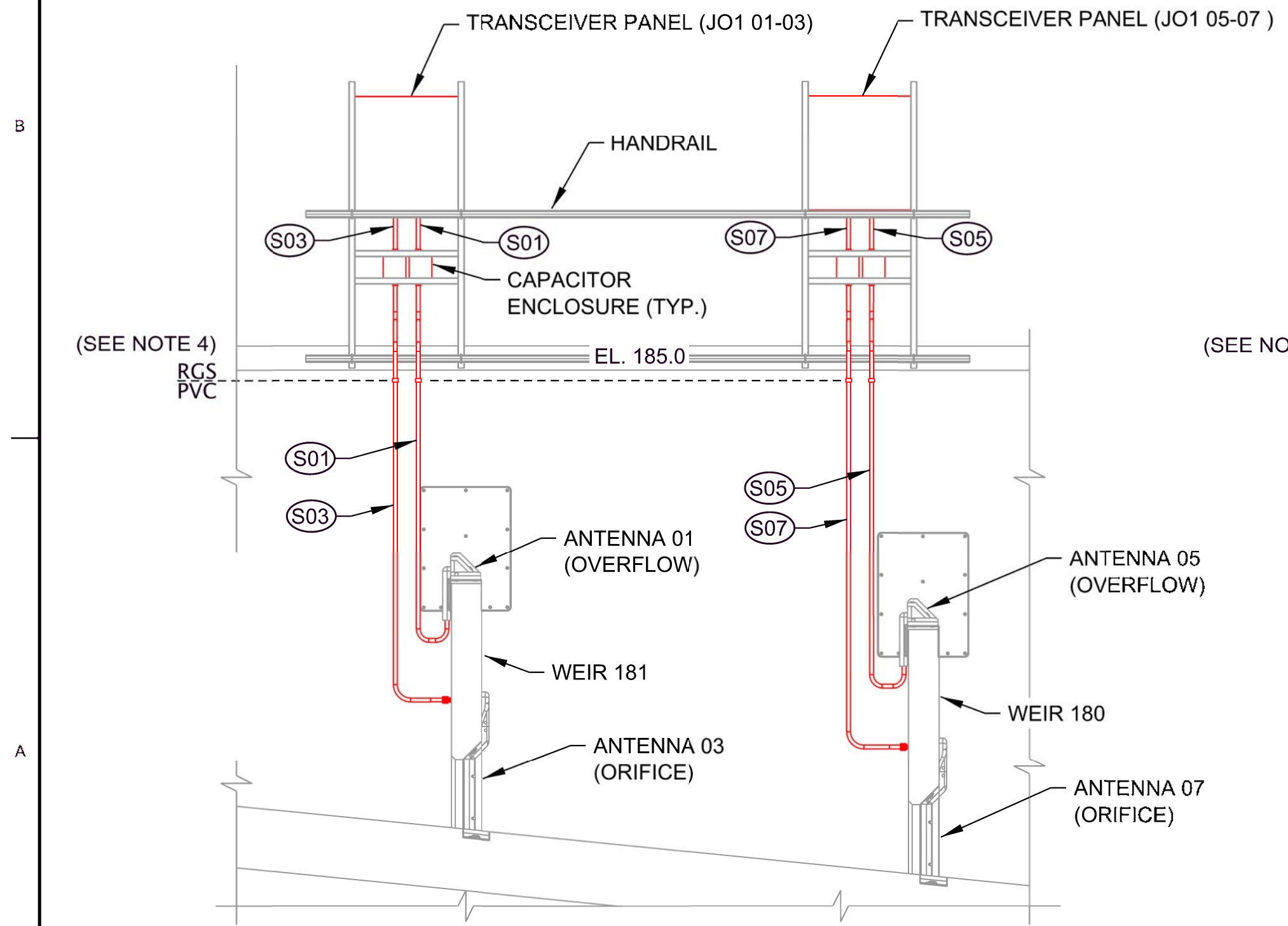
**A PARTIAL PLAN - SOUTH FISH LADDER**  
SCALE: 1/4" = 1'-0"



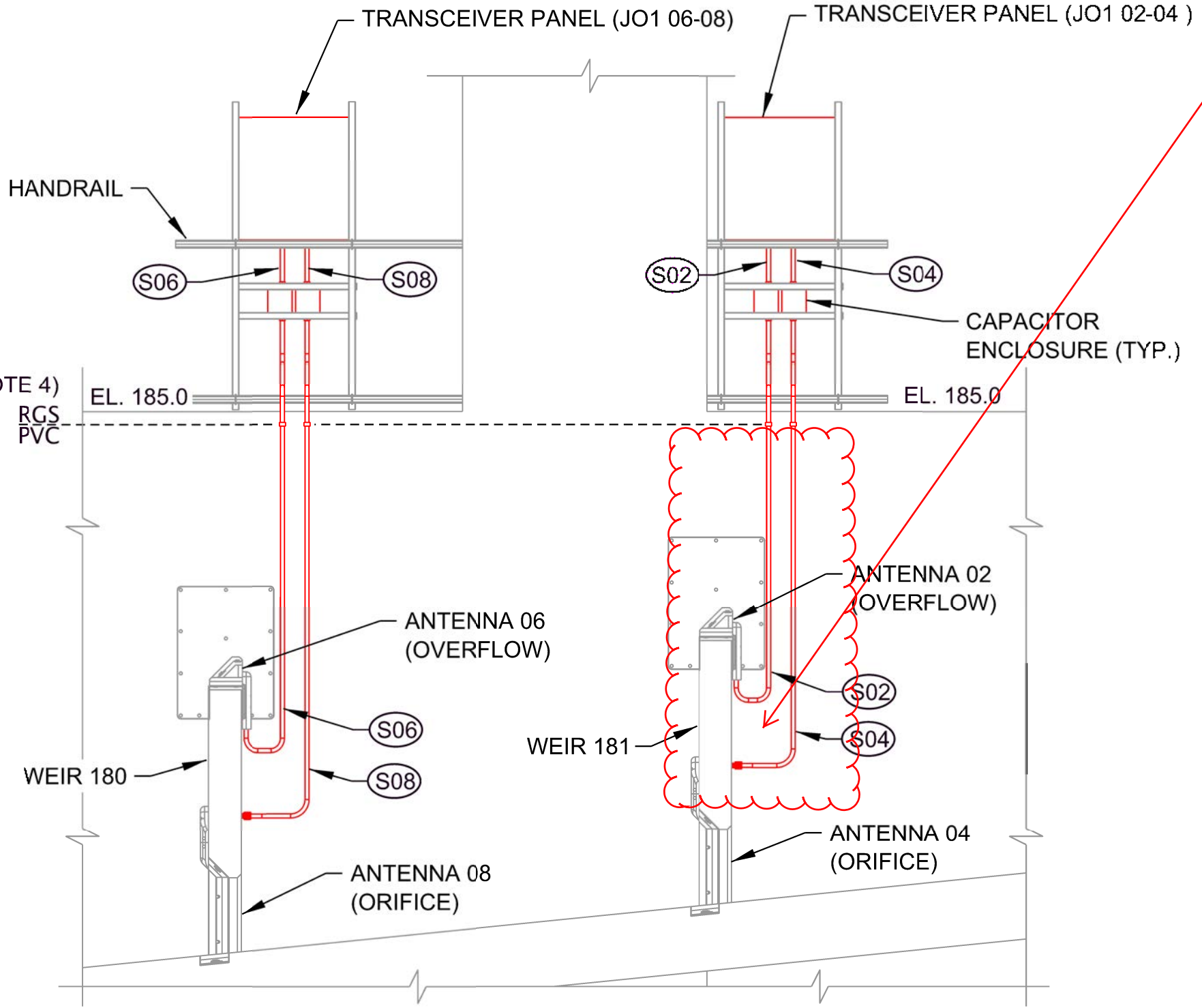
**A SECTION**  
SCALE: 3/8" = 1'-0"



**C SECTION**  
SCALE: 3/8" = 1'-0"



**B SECTION**  
SCALE: 3/8" = 1'-0"



**D SECTION**  
SCALE: 3/8" = 1'-0"

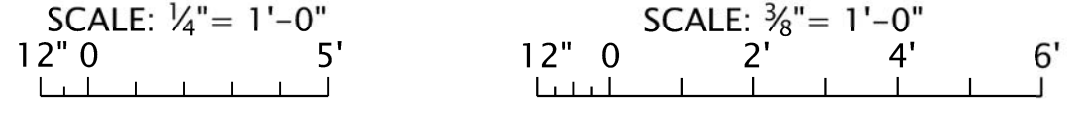
Shorter horizontal distance means vertical conduits are closer to weir. Compare to install plan for North ladder.

**INFORMATIONAL DRAWINGS**

PSFMC JDA ANTENNA ID'S (2 SHEETS)  
PSFMC JDA EXCITER CONDUIT PLAN (2 SHEETS)  
PSFMC JDA ORIFICE ANTENNA (SHEETS 2 & 27-31 OF 31)  
PSFMC JDA OVERFLOW ANTENNA (SHEETS 3 & 8 OF 31)

**NOTES:**

- ALL ITEMS SHOWN ARE EXISTING UNLESS INDICATED OTHERWISE. ITEMS IN RED ARE NEW.
- SEE SHEET E-001 FOR SYMBOL LEGEND.
- SEE SHEET E-701 FOR CONDUIT SCHEDULE.
- TRANSITION FROM PVC TO RGS CONDUIT WHERE INDICATED (ABOVE VISIBLE WATER LINE), TRANSITIONS SHALL BE MADE WITH THREADED RGS COUPLINGS OR CONDUIT BODIES.
- SEE INFORMATIONAL DRAWINGS FOR DETAILS ON CONDUIT TERMINATIONS AT ANTENNA CONDUIT COVERS.



DATE	10/10/16	WBF	APPR.
DESIGNED BY	WILLIAM FORTUNE P.E.	DATE	
CHECKED BY	E. BANNISTER	DATE	
CONTRACT NO.		DATE	
DRAWING NUMBER		DATE	
FILE NAME	JDF1_109_ES401XXX.DGN	DATE	
SIZE	1:1	DATE	
ANSI D		DATE	
DESCRIPTION	CHANGED FROM WEIRS 183 & 184 TO 180 & 181		
MARK	A1-1	DATE	

U.S. ARMY CORPS OF ENGINEERS	PORTLAND DISTRICT	PORTLAND, OREGON
DESIGNED BY	WILLIAM FORTUNE P.E.	CONTRACT NO.
CHECKED BY	E. BANNISTER	DRAWING NUMBER
DATE	10/10/16	FILE NAME
CONTRACT NO.		SIZE
DRAWING NUMBER		ANSI D
FILE NAME	JDF1_109_ES401XXX.DGN	DESCRIPTION
SIZE	1:1	
ANSI D		

JOHN DAY LOCK AND DAM  
ADULT FISH LADDER  
PIT TAG ANTENNA  
INSTALLATION  
SOUTH ADULT FISH LADDER  
TRANSCIVER PANEL INSTALLATION  
PARTIAL PLAN AND SECTIONS

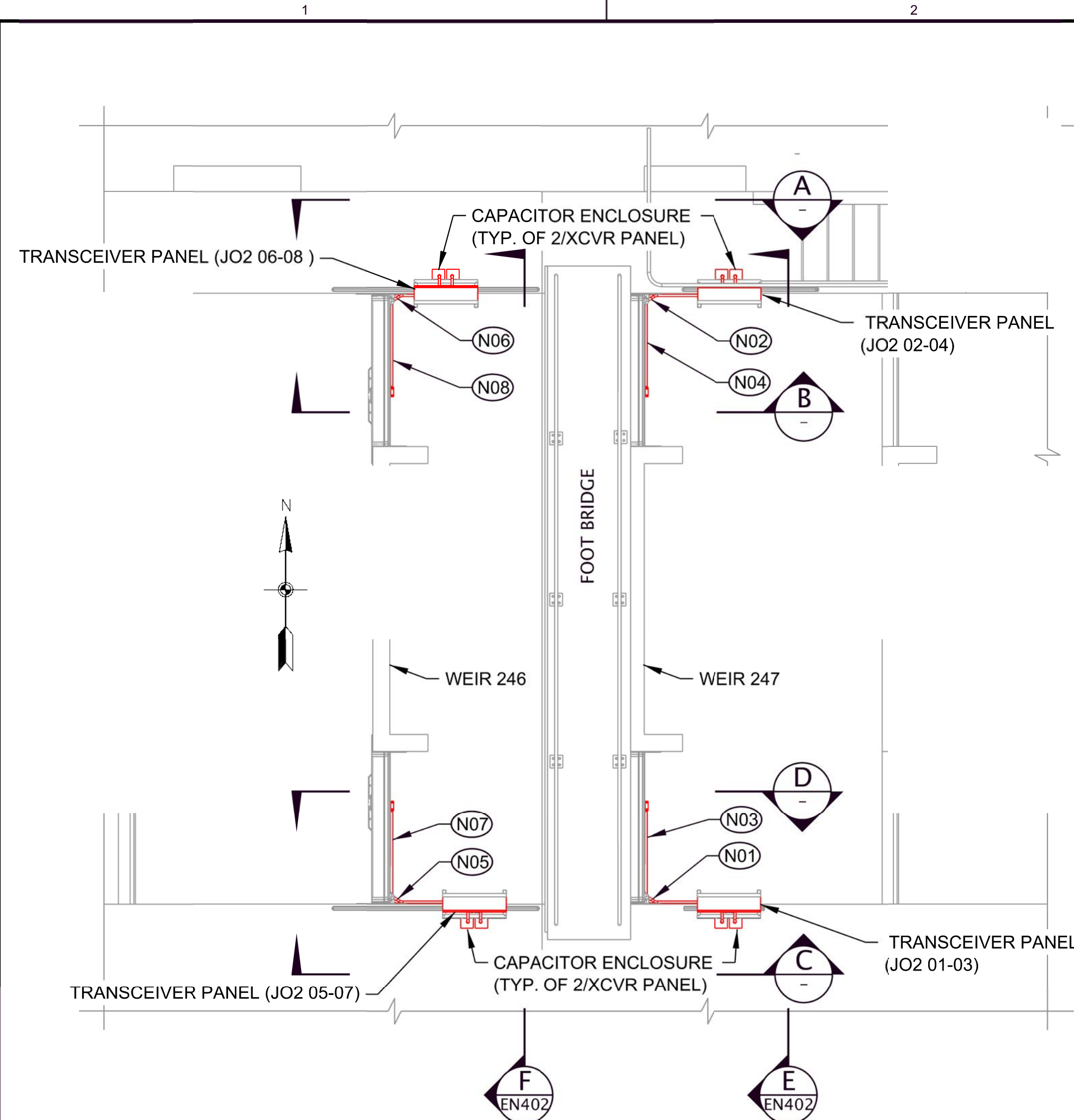
SHEET IDENTIFICATION  
**ES401**

DATE	APPR.
DESIGNED BY	DATE
CHECKED BY	DATE
DRAWN BY	DATE
PROJECT NO.	DATE
CONTRACT NO.	DATE
DRAWING NUMBER	DATE
FILE NAME	DATE
ANSI D	DATE
MARK	DATE

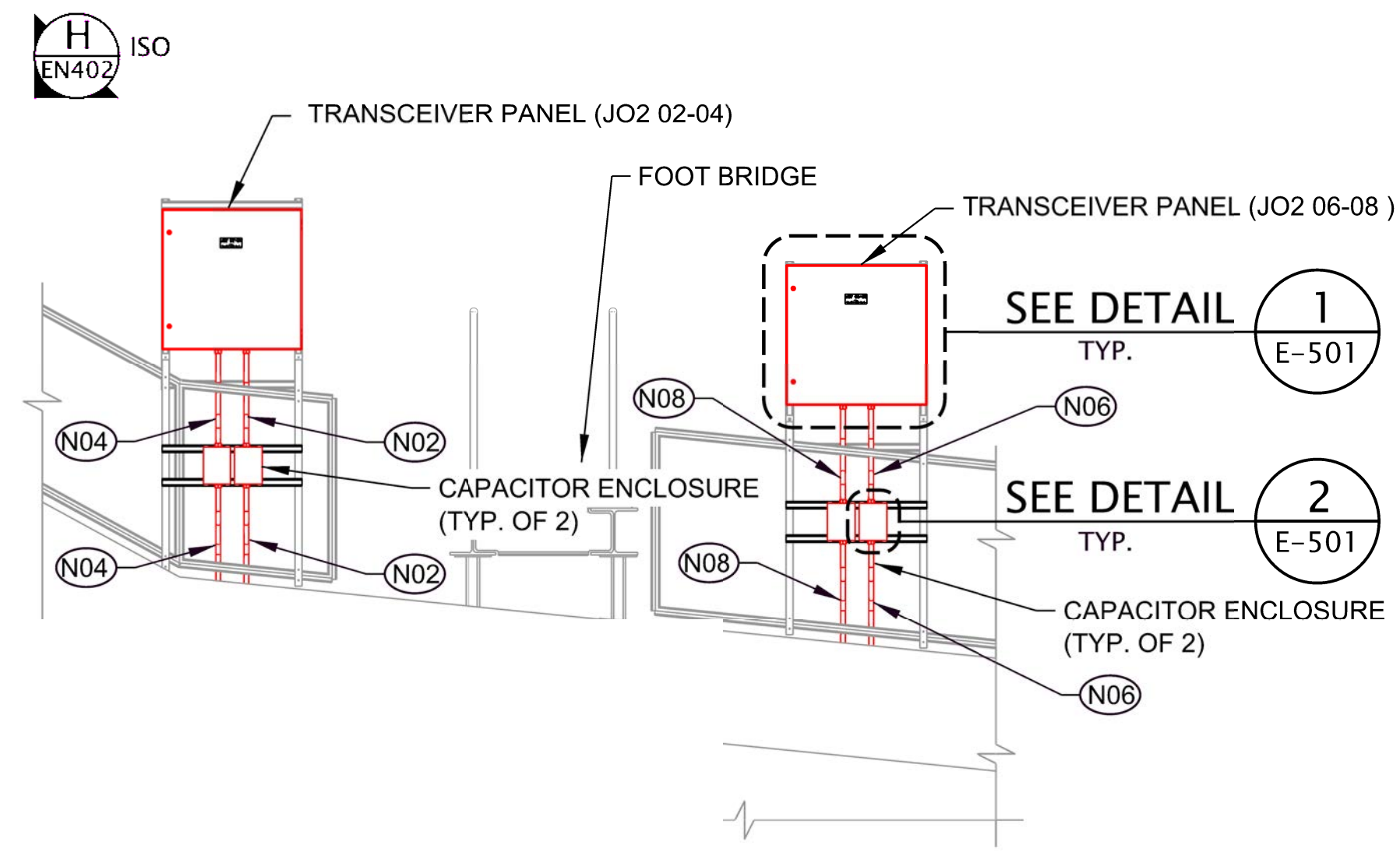
DESIGNED BY	DATE
CHECKED BY	DATE
DRAWN BY	DATE
PROJECT NO.	DATE
CONTRACT NO.	DATE
DRAWING NUMBER	DATE
FILE NAME	DATE
ANSI D	DATE

JOHN DAY LOCK AND DAM  
ADULT FISH LADDER  
PIT TAG ANTENNA  
INSTALLATION  
NORTH ADULT FISH LADDER  
TRANSCIEVER PANEL INSTALLATION  
PARTIAL PLAN AND SECTIONS

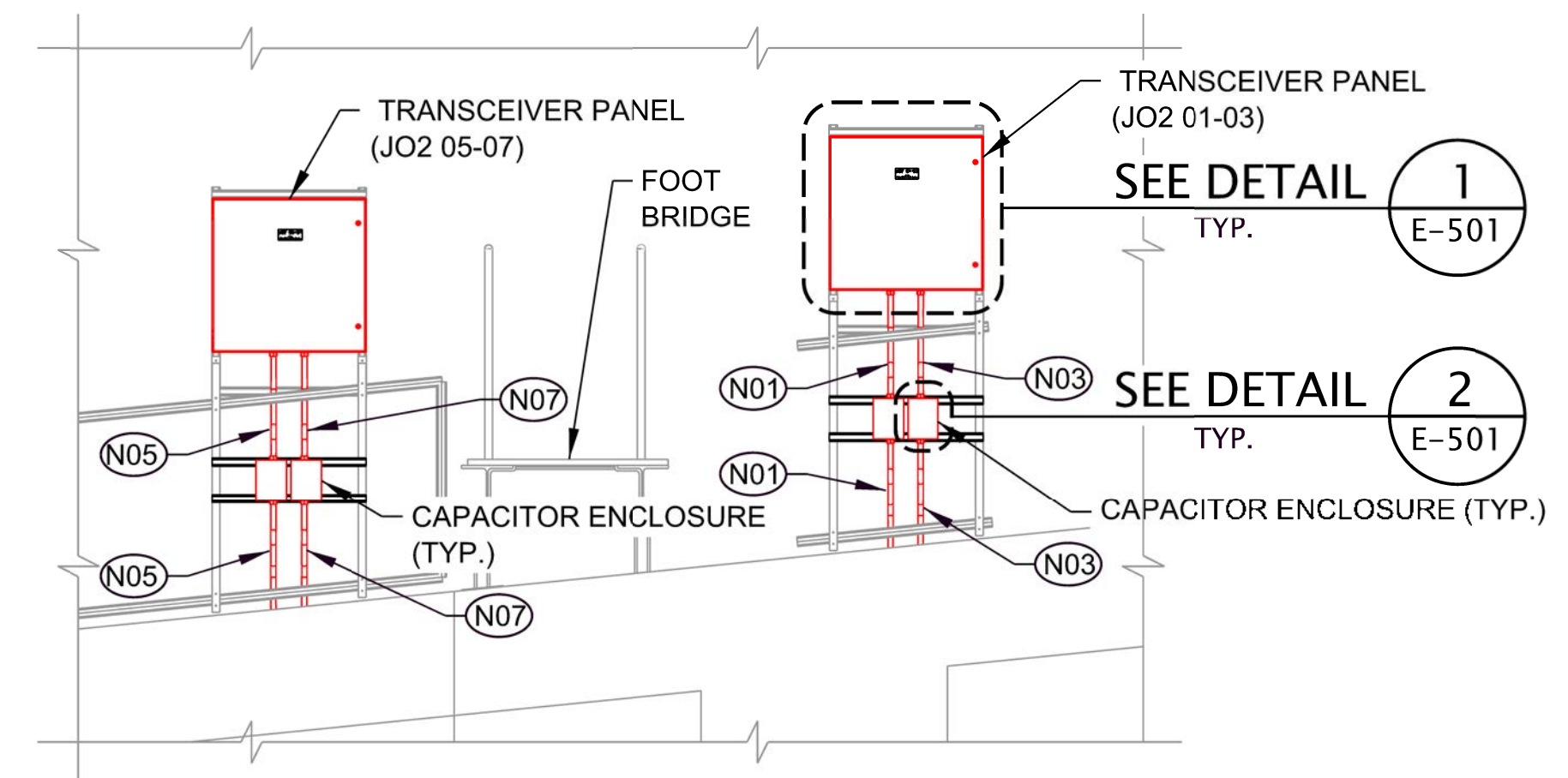
SHEET IDENTIFICATION  
EN401



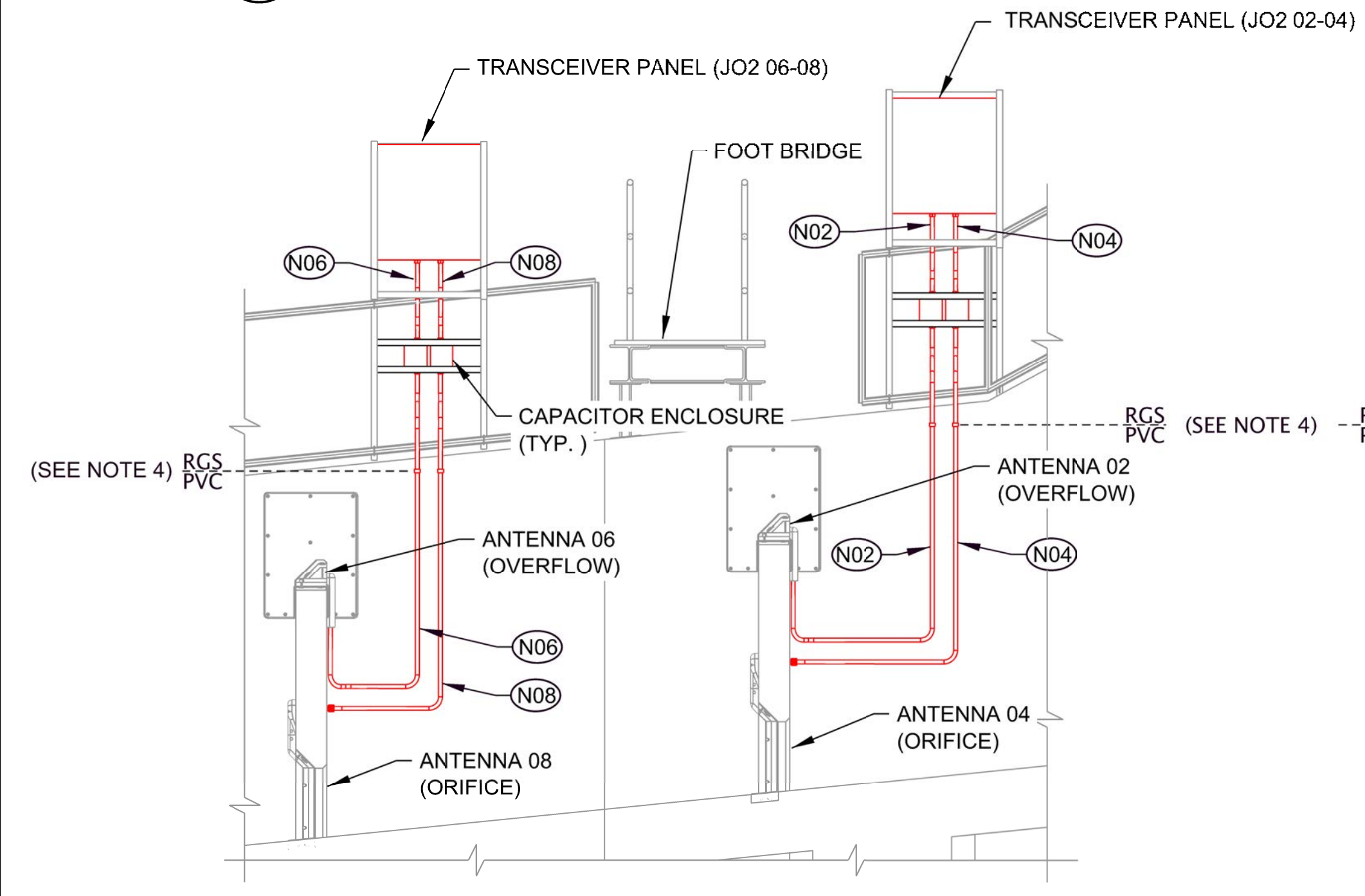
**A PARTIAL PLAN - NORTH FISH LADDER**  
SCALE: 1/4" = 1'-0"



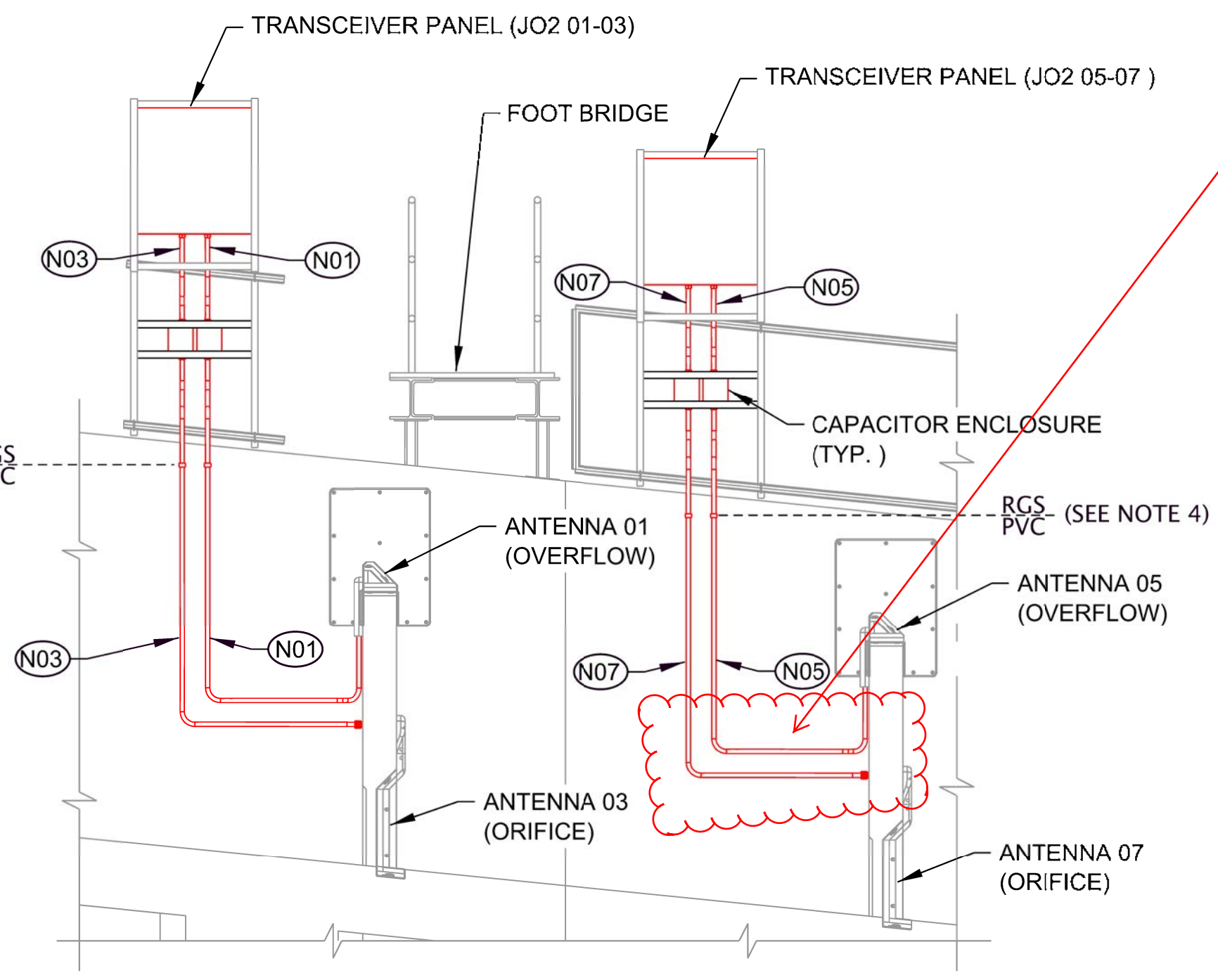
**A SECTION**  
SCALE: 3/8" = 1'-0"



**C SECTION**  
SCALE: 3/8" = 1'-0"



**B SECTION**  
SCALE: 3/8" = 1'-0"



**D SECTION**  
SCALE: 3/8" = 1'-0"

Longer horizontal distance here moved vertical conduits farther away from weir.

**INFORMATIONAL DRAWINGS**

- PSFMC JDA ANTENNA ID'S (2 SHEETS)
- PSFMC JDA EXCITER CONDUIT PLAN (2 SHEETS)
- PSFMC JDA ORIFICE ANTENNA (SHEETS 2 & 27-31 OF 31)
- PSFMC JDA OVERFLOW ANTENNA (SHEETS 3 & 8 OF 31)

**NOTES:**

- ALL ITEMS SHOWN ARE EXISTING UNLESS INDICATED OTHERWISE. ITEMS IN RED ARE NEW.
- SEE SHEET E-001 FOR SYMBOL LEGEND.
- SEE SHEET E-701 FOR CONDUIT SCHEDULE.
- TRANSITION FROM PVC TO RGS CONDUIT WHERE INDICATED (ABOVE VISIBLE WATER LINE). TRANSITIONS SHALL BE MADE WITH THREADED RGS COUPLINGS OR CONDUIT BODIES.
- SEE INFORMATIONAL DRAWINGS FOR DETAILS ON CONDUIT TERMINATIONS AT ANTENNA CONDUIT COVERS.

SCALE: 1/4" = 1'-0"  
12" 0' 5'

SCALE: 3/8" = 1'-0"  
12" 0' 2' 4' 6'